



11 Cherry Lane Bowral NSW

4  2  2 

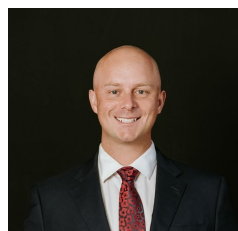
Set on just over 1,300sqm, this inviting family home is embraced by quintessential gardens that provide a beautiful outlook in every season. Well cared for and thoughtfully updated, the property offers a perfect blend of comfort, style, and functionality.

Inside, reverse-cycle ducted air conditioning ensures year-round comfort, while the main living area impresses with a vaulted ceiling, gas heating, and sliding doors that open out to the gardens, creating a seamless indoor-outdoor connection.

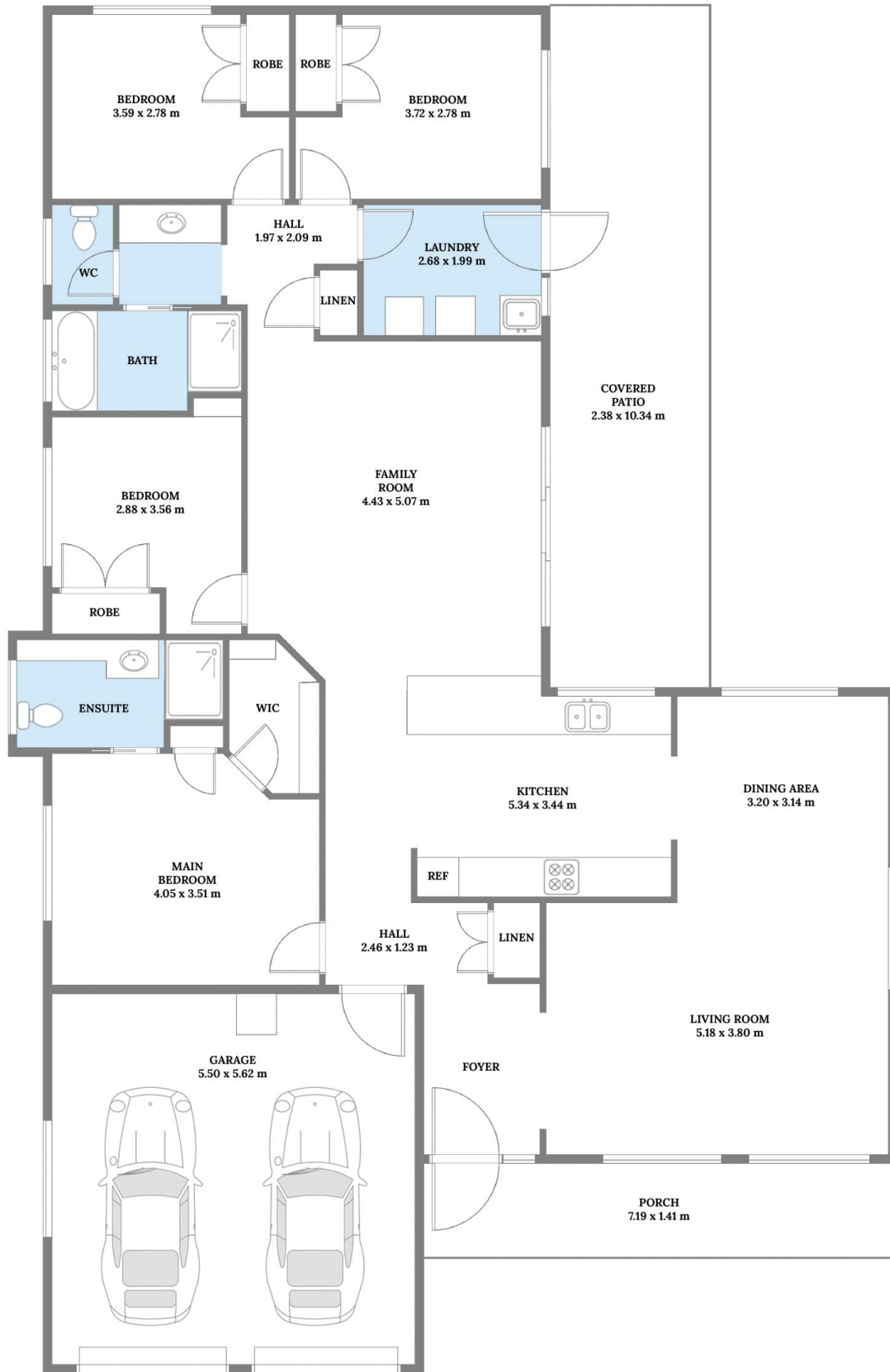
The open-plan lounge and dining area flows effortlessly to the galley-style kitchen, making it an ideal space for both

[For full version visit the website](https://www.firstnationalbowral.com.au)

Type : House
Price : Contact Agent
Land Size : 1310 sqm
View : <https://www.firstnationalbowral.com.au/8704388>



Reece Woods
4861 4861



	Internal	:	151sqm
	External	:	132sqm
	Total Area	:	283sqm

Scale in metres. Indicative only. All information contained herein is obtained from sources we believe to be accurate. We cannot guarantee its accuracy. Interested persons should make and rely on their own enquiries.