



### 16 Whittaker Road Marulan NSW

4  2  2 

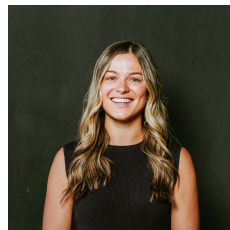
Positioned between Goulburn and the Southern Highlands, this exceptional brand new residence presents an outstanding opportunity to secure a quality home within one of Marulan's fastest growing estates. Surrounded by other newly built homes and set on a generous 710sqm block, this property combines modern comfort with the space and flexibility increasingly difficult to find in today's market.

Privately located at the front of the home, the master suite offers parents their own peaceful retreat, complete with a spacious walk-through robe and a beautifully appointed ensuite with woodgrain vanity and floor to ceilings tiles.

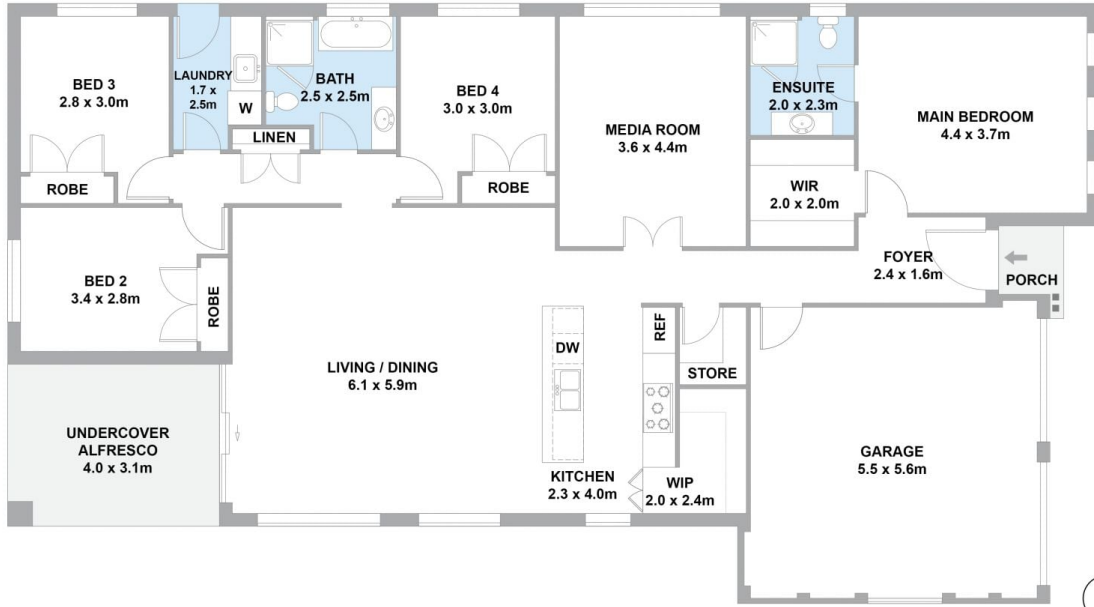
The rest of the home has been cleverly designed with

[For full version visit the website](https://www.firstnationalbowral.com.au)

**Type** : House  
**Price** : Contact Agent  
**Building Size** : 245 sqm  
**Land Size** : 710 sqm  
**View** : <https://www.firstnationalbowral.com.au/8689715>



**Isabella McMahon**  
02 4861 4861



FLOOR PLAN



Internal : 201.06 sqm  
External : 14.59 sqm  
Total : 215.65 sqm

## 16 Whittaker Road, Marulan

Scale in metres. Indicative only. All information contained herein is obtained from sources we believe to be accurate. We cannot guarantee its accuracy. Interested persons should make and rely on their own enquiries.