



89 Appenine Road Yerrinbool NSW

3  1  4 

Positioned on a generous 833m² corner block in the peaceful village of Yerrinbool, this impressive home delivers multiple living spaces, functionality and effortless indoor-outdoor living.

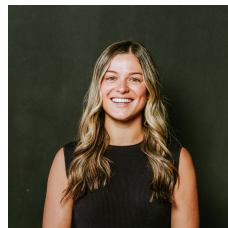
At the heart of the home, the modern kitchen features a large picture window overlooking the pool. The covered outdoor entertaining area, creating a natural connection between indoor and outdoor spaces ideal for weekend BBQs or relaxed evenings with family and friends.

Property features include:

- Open plan living with a second living/dining area
- Laundry with second toilet and external access

[For full version visit the website](https://www.firstnationalbowral.com.au)

Type : House
Price : Contact Agent
Land Size : 833 sqm
View : <https://www.firstnationalbowral.com.au/8689107>



Isabella McMahon
02 4861 4861



FLOOR PLAN



Internal : 127.00 sqm
External : 137.00 sqm
Total : 264.00 sqm

89 Appenine Road, Yerrinbool

Scale in metres. Indicative only. All information contained herein is obtained from sources we believe to be accurate. We cannot guarantee its accuracy. Interested persons should make and rely on their own enquiries.