



**585 Ellsmore Road Exeter NSW**

3  1  6 

Set amidst beautifully established gardens and mature trees, this inviting three-bedroom brick family home offers a peaceful rural outlook and a true sense of country living. Positioned on a perfectly level, five-acre parcel, the picturesque, tree-lined circular driveway sets the tone for this park-like estate, blending privacy and tranquillity all just a short drive from the village of Exeter and the best of the Highlands.

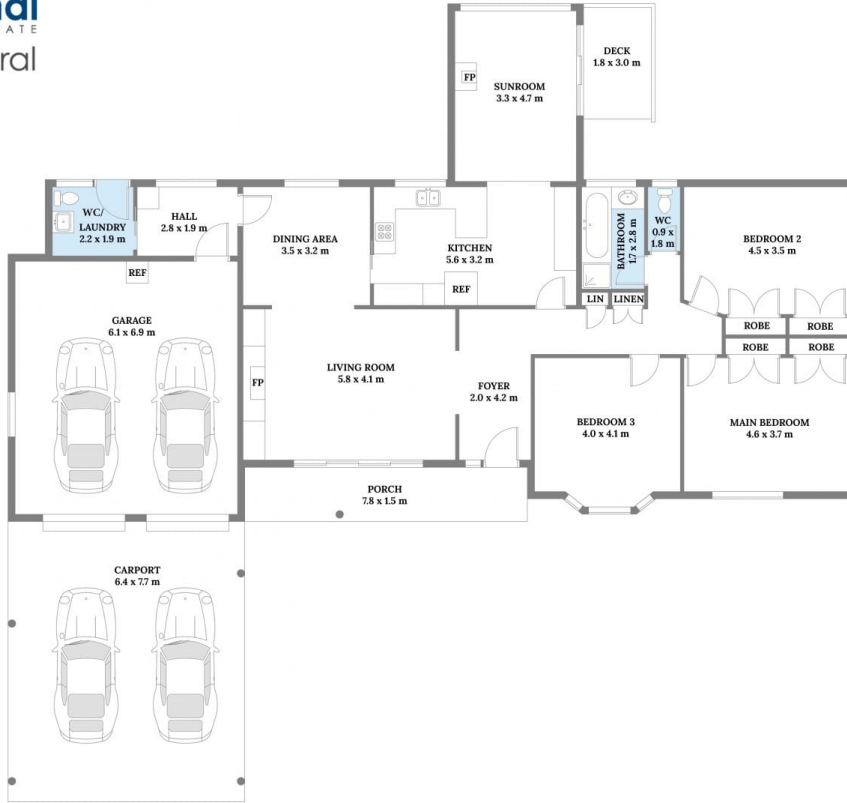
Stepping inside, a welcoming entry hall leads you to the heart of the home. At the front, a spacious formal lounge features double glass doors opening onto a covered porch, perfectly framing the garden views. A separate dining room showcases floor-to-ceiling windows overlooking the rear

**Type** : House  
**Price** : Contact Agent  
**Land Size** : 2.02 ha  
**View** : <https://www.firstnationalbowral.com.au/8675624>



**Nanette Phillips**  
02 4861 4861

[For full version visit the website](https://www.firstnationalbowral.com.au)



House Area: 177 sqm  
Garage Area: 42 sqm  
Carport: 49 sqm

Total Area: 268 sqm



## 585 Ellsmore Road, Exeter

Scale in metres. Indicative only. All information contained herein is obtained from sources we believe to be accurate. We cannot guarantee its accuracy. Interested persons should make and rely on their own enquiries.