



2/3-5 Railway Crescent Mittagong NSW

2  1  1 

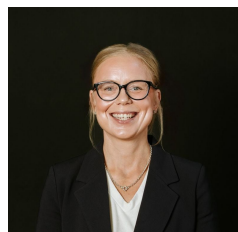
This beautifully updated residence offers generous living spaces, excellent storage, and a private courtyard, all set within a quiet, well-maintained complex of just six homes. Perfectly positioned within walking distance to transport, schools, and shops.

The property includes:

- Light-filled open-plan living and dining plus separate family room
- Kitchen with brand new electric oven and rangehood
- Two large bedrooms with built-in robes
- Single covered carport with secure storage cage
- Fully enclosed private courtyard garden

[For full version visit the website](https://www.firstnationalbowral.com.au)

Type : Townhouse
Price : \$595 per week
Building Size : 89 sqm
Land Size : 57 sqm
View : <https://www.firstnationalbowral.com.au/8608535>



Katie Schoonbeek
4861 4861